



Embrace Living



## THE COTTAGES

### Independent Living

*Forty-five, single story cottage homes include:*

- Two bedrooms, two baths
- Front porch and rear patio
- Attached, one-car garage
- Floor plans ranging from 995 - 1,110 square feet – some include a den or bay window
- Vaulted ceiling
- Gas fireplace
- Laundry area with hook-up for washer and dryer
- Fully-equipped, eat-in kitchen with dishwasher, disposal and microwave oven
- Personal emergency response system
- Lawn care, snow removal, water and trash pick-up
- Areas to garden, if you choose
- Scheduled transportation and community activities available
- Fine dining available at the Briarwood dining room
- Casual dining available at the Chestnut Court Café
- Cottages are nestled in private, village-like setting
- Security staff are on duty 24 hours each day
- All amenities of St. John's Meadows are available along with priority access to St. John's Home

#### 2010 Rent Schedule

2 bdrm, 2 bath	995 sq. ft.	\$2,020/mo.
2 bdrm, 2 bath w/bay window	1,020 sq. ft.	\$2,170/mo.
2 bdrm, 2 bath w/den	1,110 sq. ft.	\$2,335/mo.

#### À la carte options

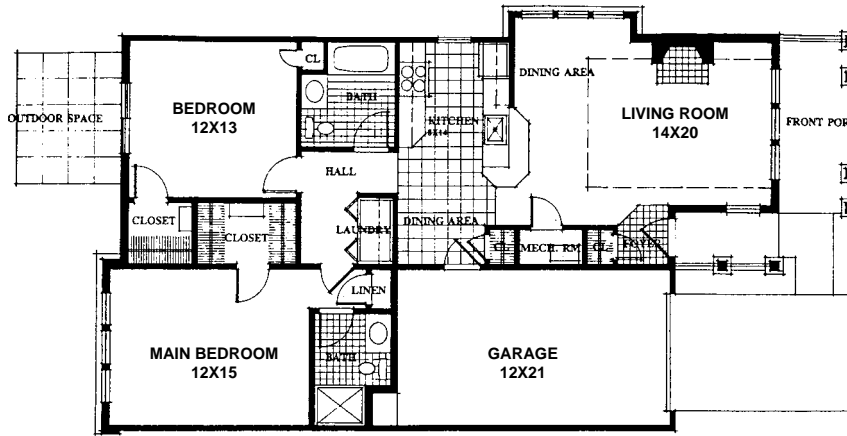
- **Lunch at Chestnut Court Café** \$5 - \$10 depending on your order
- **Dinner at the Briarwood/Hawthorne** Resident \$13 / Guest \$16
- **Housekeeping Services** \$18 per hour
- **Transportation** \$12 round trip for medical/personal appointments within 1.5 mile radius, \$18 round trip for medical/personal appointments within 10.0 mile radius. \$1 for each additional mile over a 10.0 mile radius. (grocery shopping is offered weekly at no additional expense for all residents)
- **Handyman Maintenance Services** \$20 per hour – two hours of courtesy service during initial move-in month
- **Additional Garage Rental** \$70 per month
- **Gas & Electric** range from \$75-150 to \$100 - 150 per month
- **Frontier Telephone & Time Warner Cable Television** are additional (special rate: \$22/mo. for 99 channels)



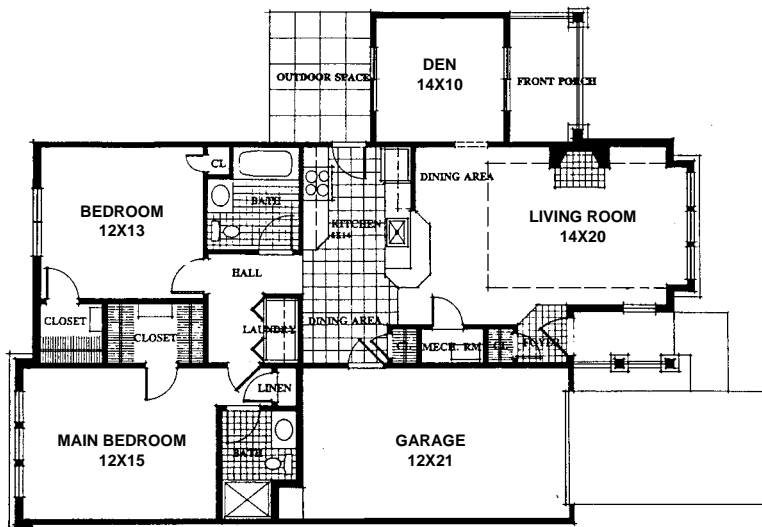
# St. John's

## MEADOWS

### Sample Floor Plan\*



2 Bedroom, 2 bath w/bay window • 1,020 Square Feet



2 Bedroom, 2 bath w/den • 1,110 Square Feet

\*Further floor plans are available when you meet with St. John's Meadows community representative.



1 Johnsarbor Drive West  
Rochester, New York 14620  
585-442-1300

© 2009 St. John's and St. John's Meadows and its associated logos are trademarks of St. John's Senior Services, Inc.